

Wivelsfield Station - Opportunities (12570-WS-SK01)

Crossing on Leylands Road

- Path to tie in to upgraded Toucan crossing on Leylands Rd.
- Consider increasing prominence of crossing and access points through use of signage, planting and artwork

Drainage improvement

- Continue water / sustainable drainage feature alongside path

Route improvement

- Alternative less direct route to ease gradient
- The route could be improved by including placemaking features such as seating, and possibly play and wayfinding elements

Lighting requirement

Consider installing ecologically sensitive lighting to improve safety for users

Placemaking opportunity

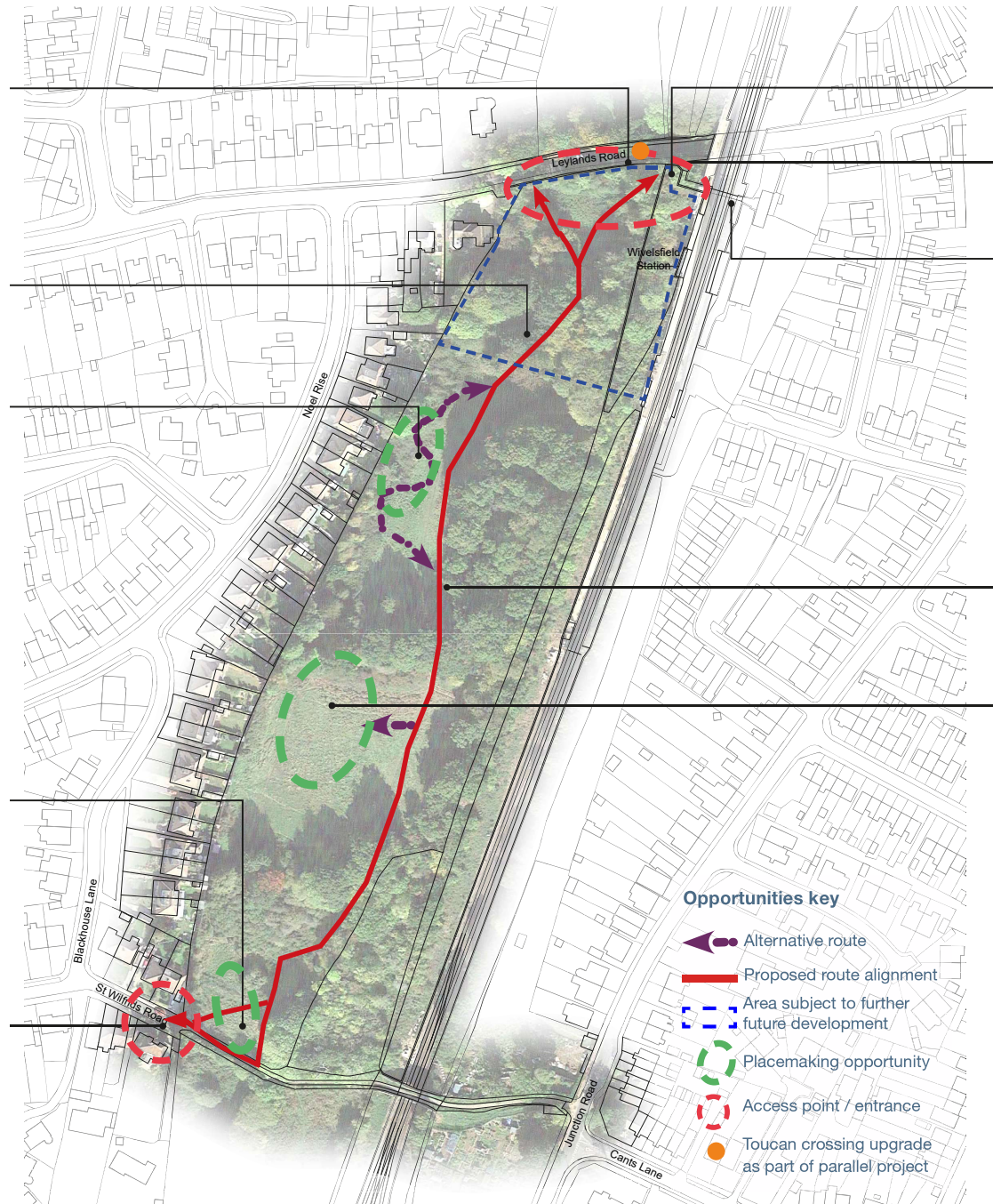
Enhance space for all users by considering elements such as:

- Childrens play features.
- A wild-flower meadow
- An Orchard
- Sustainable drainage features for example a reed bed or bio-retention basin
- A nature / wildlife area

Allow easier access to the space by removing the fencing and other barriers.

Access from St Wilfreds Road

- Remove bollards and replace with single demountable bollard to improve access.
- Increase prominence of access point through use of signage, planting and artwork



Facilities

- Additional bicycle parking facilities within an area of hard-standing

Drainage

- Requires culverting

Transport link

- Tie in to current station proposals

Route

- Path construction 3-4m width
- No dig construction for root protection

Placemaking opportunity

Enhance space for all users by considering elements such as:

- Benches / resting places
- Play elements
- Art features.

Opportunities key

- Alternative route
- Proposed route alignment
- Area subject to further future development
- Placemaking opportunity
- Access point / entrance
- Toucan crossing upgrade as part of parallel project

Revision	Description	Author	Check	Date
-		VS	FM	19.2.20
A	Feedback following discussions with Network Rail	VS	FM	26.2.20
B	Minor amends	HM	PS	05.3.20
C	Minor amends	HM	PS	07.5.20